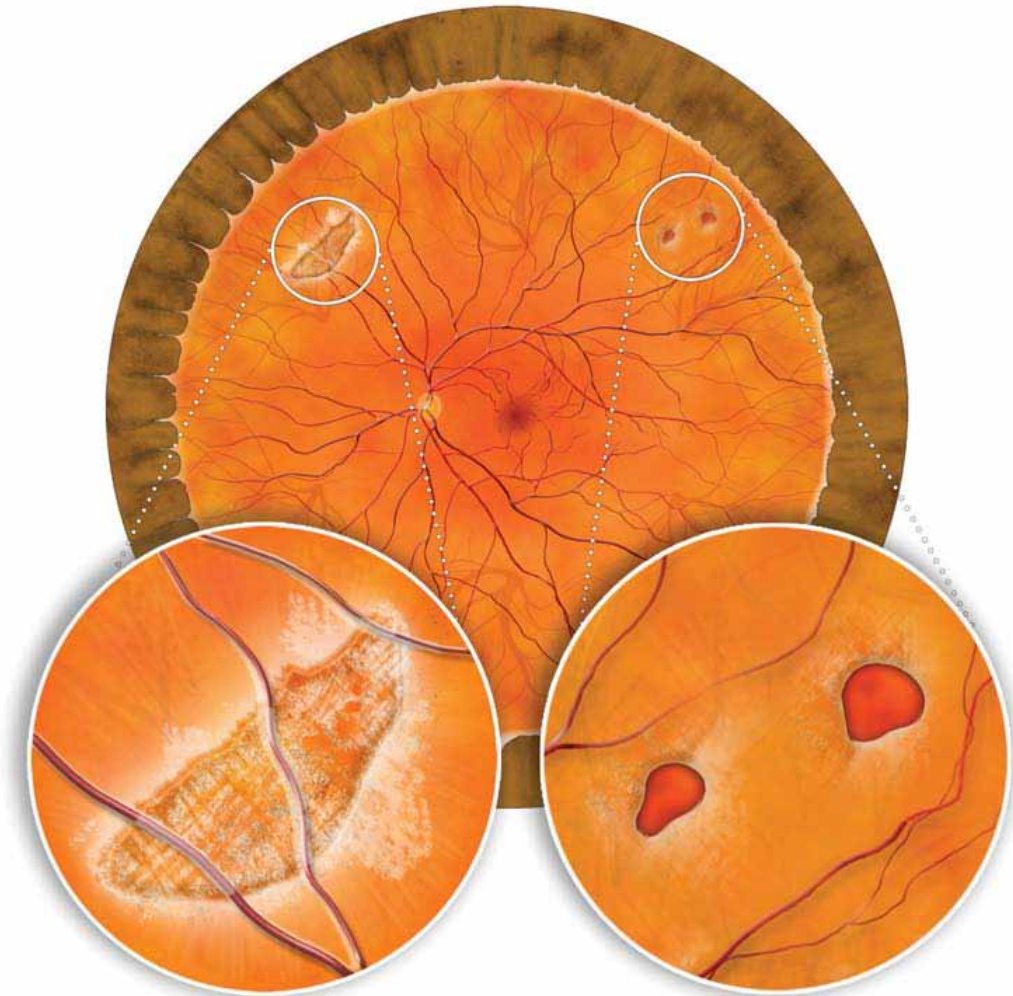


Lattice Degeneration & Peripheral Retinal Holes



Lattice Degeneration
(Retinal Thinning)

Retinal Holes

Houston Retina Associates, P.A.

Southwest Houston • 7789 Southwest Freeway, Suite 530 • Houston, TX 77074

Katy • 23920 Katy Freeway, Suite 575 • Katy, TX 77494

Clear Lake • 561 Medical Center Boulevard, Suite E • Webster, TX 77598

Phone (281) 495 – 2222 • www.HRetina.com

Lattice Degeneration & Peripheral Retinal Holes

The majority of the retina's surface area is considered peripheral retina. The peripheral retina is responsible for side vision, also known as, peripheral vision. Some people have areas of thinning in the peripheral retina, known as lattice degeneration. The thinning can be severe enough that a retinal hole can develop.

Usually, retinal holes and lattice degeneration cause no visual symptoms and are diagnosed on a routine eye examination. Lattice degeneration and retinal holes can be a precursor to a sight threatening condition called a retinal detachment.

Treatments: Several factors will determine whether lattice degeneration or retinal holes need to be treated. Patients with lattice degeneration and retinal holes should have a careful and thorough assessment to determine the risk of a retinal detachment. Patients who are at high risk for retinal detachment may be treated preventatively. Preventative treatment usually consists of a laser treatment performed in the office.

Prognosis: In the absence of a retinal detachment or other complications, patients with lattice degeneration and retinal holes should not develop visual problems.

Houston Retina Associates, P.A.

Southwest Houston • 7789 Southwest Freeway, Suite 530 • Houston, TX 77074

Katy • 23920 Katy Freeway, Suite 575 • Katy, TX 77494

Clear Lake • 561 Medical Center Boulevard, Suite E • Webster, TX 77598

Phone (281) 495 – 2222 • www.HRetina.com