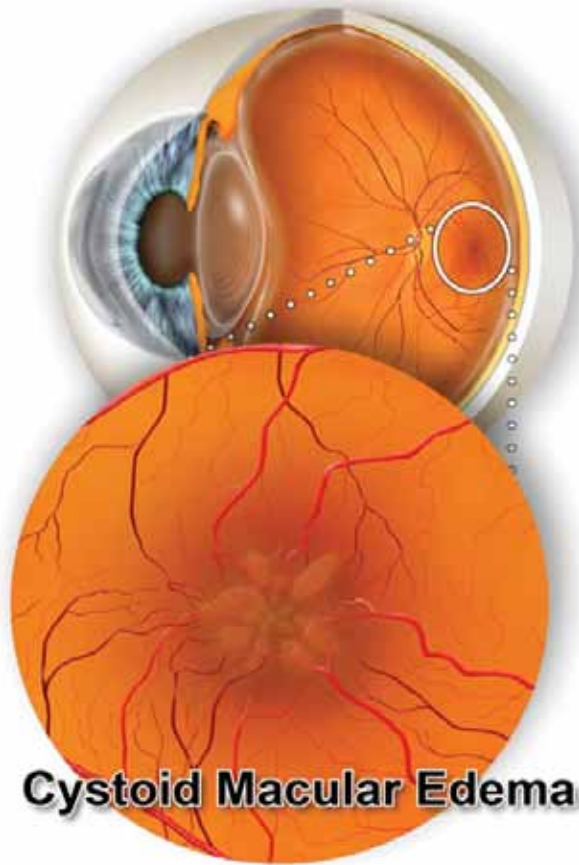


## Cystoid Macular Edema



**Cystoid macular edema (CME)**, or swelling of the macula, arises as a response to disease, injury, or in rare instances eye surgery. Clear fluid accumulates within layers of the macula causing visual blur and/or visual distortion.

**Diagnosis:** Detecting CME can be difficult with a standard retinal examination since the swelling can be very subtle. Fluorescein angiography and optical coherence tomography (OCT) are excellent tests to diagnose CME.

**Treatment:** The treatment of CME depends on the underlying cause and the severity of the swelling. Topical drops are often used as first line treatment. In more severe cases, an anti-inflammatory steroid injection can be given into or around the eye to reduce the macular swelling. Vitrectomy or laser surgery may be recommended if CME is caused by a condition which is not normally treatable by medicines alone.

Houston Retina Associates, P.A.

Southwest Houston • 7789 Southwest Freeway, Suite 530 • Houston, TX 77074

Katy • 23920 Katy Freeway, Suite 575 • Katy, TX 77494

Clear Lake • 561 Medical Center Boulevard, Suite E • Webster, TX 77598

Phone (281) 495 – 2222 • [www.HRetina.com](http://www.HRetina.com)